

PVC DWV

LIST PRICE SCHEDULE PVC-526
Effective May 4, 2026
(Updated June 1, 2026)
Supersedes Price Schedule PVC-426

Possession of this price list shall not be construed as an offer to sell the products listed.
Charlotte Pipe and "You can't beat the system" are registered trademarks of Charlotte Pipe and Foundry Company.
© 1967-2026 Charlotte Pipe and Foundry Company.



ASTM D 2665 &
ASTM F 1866

>> PVC Drain-Waste-Vent Fittings

For Non-Pressure Applications

Size	UPC# 611942-	No. Per Carton	No. Per Pallet	List Price Each	Size	UPC# 611942-	No. Per Carton	No. Per Pallet	List Price Each
------	-----------------	-------------------	-------------------	--------------------	------	-----------------	-------------------	-------------------	--------------------



**Part No. PVC 100
Coupling**
(H x H)

1¼	03188	100	8000	\$88.55
1½	03189	100	5600	18.50
2	03190	100	4900	25.35
3	03191	60	1080	88.55
4	03192	25	700	150.50
6	03193	15	180	491.95
8	03194	6	72	817.55
10	03195	-	-	*
12	03196	-	-	*
14 ^(F)	12190	-	-	*
16 ^(F)	12191	-	-	*



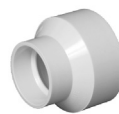
**Part No. PVC 101
Female Adapter**
(FPT x H)

1¼	03197	100	8000	\$195.95
1½	03198	100	5600	35.10
2	03199	100	4900	59.75
3	03200	25	875	159.35
4	03201	10	560	207.00
6	03202	10	180	663.90
8	11342	6	72	1,518.65
10 ^(F)	12192	-	-	*
12 ^(F)	12193	-	-	*



**Part No. PVC 101 X
Female Adapter with Cleanout Plug**
(FPT x H)

8	12269	5	80	\$2,935.85
10 ^(F)	12267	-	-	* N
12 ^(F)	12268	-	-	* N



**Part No. PVC 102
Pipe Increaser-Reducer**
(H x H)

1½x2	03203	25	3600	\$56.20
1½x3	03204	25	1400	164.60
2x3	03205	20	1600	128.25
2x4	03206	10	800	251.35
3x4	03207	20	1120	268.75
3x6	11073	5	140	1,291.55
4x6	11074	5	140	1,044.95
4x8	11343	2	70	1,454.55
4x10**	11344	-	-	*
4x12**	12184	-	-	*
4x14 ^(F)	12199	-	-	* N
4x16 ^(F)	12178	-	-	* N
6x8	11123	2	70	1,169.40
6x10	11124	-	-	*
6x12**	11345	-	-	*
6x14 ^(F)	12195	-	-	* N
6x16 ^(F)	12198	-	-	* N
8x10	10012	-	-	*
8x12	10014	-	-	*
8x14 ^(F)	12175	-	-	*
8x16 ^(F)	12179	-	-	* N
10x12	10015	-	-	*
10x14 ^(F)	12176	-	-	* N
10x16 ^(F)	12177	-	-	* N
12x14 ^(F)	12194	-	-	*
12x16 ^(F)	12196	-	-	*
14x16 ^(F)	12197	-	-	*

^(F) Fabricated

* For pricing of this item, please see current PVC Large-Diameter DWV fitting list price schedule.

** Assembled from two molded components

Note: N = non-stock item – contact customer service for availability.

You can't beat the system.®

Size	UPC# 611942-	No. Per Carton	No. Per Pallet	List Price Each	Size	UPC# 611942-	No. Per Carton	No. Per Pallet	List Price Each
------	-----------------	-------------------	-------------------	--------------------	------	-----------------	-------------------	-------------------	--------------------



Part No. PVC 103
Trap Adapter - Male
(DWV SPG x Tubular SLIP)

1½x1¼	03208	100	8000	\$76.05
1½	03209	50	7200	68.30
2	03210	25	3600	247.55



Part No. PVC 103 P
Trap Adapter - Male
(DWV SPG x Tubular SLIP with Washer & Polyethylene Nut)

1½x1¼	03211	75	6000	\$78.75
1½	03212	50	5600	72.55
2 ^(PN)	03213	25	3600	347.85



Part No. PVC 103 R
Trap Adapter - Male with 1½" Plastic Nut and Washers to Fit 1½" and 1¼" Traps
(DWV SPG x Tubular SLIP with Plastic Nut)

1½	04139	50	5600	\$77.50
----	-------	----	------	----------------



Part No. PVC 103 W
Trap Adapter - Male
(DWV SPG x Tubular SLIP with Washer & Plastic Nut)

1½x1¼	13282	75	6000	\$94.05
1½	12479	50	5600	74.75
2	12544	25	3600	393.95



Part No. PVC 103 X
Trap Adapter - Male
(DWV SPG x Tubular SLIP with Washer & Chrome Nut)

1½x1¼	03214	100	8000	\$98.40
1½	03215	50	5600	97.25
2	03216	25	3600	440.90

^(PN) with Plastic Nut



Part No. PVC 104
Trap Adapter - Female
(DWV H x Tubular SLIP)

1½x1¼	03220	50	5600	\$74.65
1½	03221	50	7200	58.30



Part No. PVC 104 P
Trap Adapter - Female
(DWV H x Tubular SLIP with Washer & Polyethylene Nut)

1¼	12537	50	5600	\$84.75
1½x1¼	03223	50	5600	69.50
1½	03224	50	5600	69.00



Part No. PVC 104 R
Trap Adapter - Female with 1½" Plastic Nut and Washers to Fit 1½" and 1¼" Traps
(DWV H x Tubular SLIP with Plastic Nut)

1½	04140	50	5600	\$79.20
----	-------	----	------	----------------



Part No. PVC 104 W
Trap Adapter - Female
(DWV H x Tubular SLIP with Washer & Plastic Nut)

1¼	13283	50	5600	\$75.25
1½x1¼	13284	50	5600	72.20
1½	12478	50	5600	73.00
2	12484	25	3600	143.65



Part No. PVC 104 X
Trap Adapter - Female
(DWV H x Tubular SLIP with Washer & Chrome Nut)

1¼	03226	50	5600	\$121.20
1½x1¼	03227	50	5600	94.60
1½	03228	50	5600	97.60
2	13285	25	3600	246.55

H = Hub
SPG = Spigot
SLIP = Slip
MPT = Male Pipe Thread
FPT = Female Pipe Thread

Size	UPC# 611942-	No. Per Carton	No. Per Pallet	List Price Each	Size	UPC# 611942-	No. Per Carton	No. Per Pallet	List Price Each
------	-----------------	-------------------	-------------------	--------------------	------	-----------------	-------------------	-------------------	--------------------



**Part No. PVC 105
Fitting Cleanout Adapter**
(SPG x FPT)

1¼	13286	50	7200	\$70.45
1½	03233	50	5600	44.65
2	03234	50	4000	59.75
3	03235	25	1225	160.35
4	03236	10	560	263.60
6	03237	10	280	750.30
8	12180	5	80	2,775.70
10 ^(F)	10175	-	-	*
12 ^(F)	10176	-	-	*



**Part No. PVC 105 X
Fitting Cleanout Adapter with Cleanout
Plug**
(FPT x SPG)

1½	03239	50	4000	\$77.80
2	03240	50	2800	97.00
3	03241	25	875	226.55
4	03242	10	560	361.65
6	03243	10	180	1,062.10
8	12181	5	80	5,661.50
10 ^(F)	10178	-	-	*
12 ^(F)	10179	-	-	*



**Part No. PVC 106
Cleanout Plug**
(MPT)

1½	03251	50	7200	\$33.15
2	03252	50	7200	37.25
3	03253	25	2800	66.20
4	03254	20	1600	98.15
6	03255	10	800	311.70
8	10162	5	280	1,417.30
10	12185	-	-	*
12	12186	-	-	*

^(F) Fabricated

* For pricing of this item, please see current PVC Large-Diameter DWV fitting list price schedule.

** Assembled from two molded components

Note: N = non-stock item – contact customer service for availability.



**Part No. PVC 106 A
Cleanout Plug with O-Ring**
(MPT)

2	15361	50	5600	\$45.35
3	15362	25	2000	80.65
4	15363	20	1600	119.85



**Part No. PVC 107
Flush Bushing**
(SPG x H)

1½x1¼	03261	100	14400	\$73.95
2x1¼	03262	50	7200	88.40
2x1½	03263	50	7200	32.35
3x1½	03264	25	2000	154.25
3x2	03265	25	2000	81.50
4x2	03266	30	1470	268.15
4x3	03267	30	1470	138.60
6x4	03268	10	490	688.95
8x4	10618	1	112	1,242.95
8x6	03269	1	112	1,348.75
10x4**	12187	-	-	*
10x6**	11346	-	-	*
10x8	10180	-	-	*
12x4**	11347	-	-	*
12x6**	10634	-	-	*
12x8	10181	-	-	*
12x10	10182	-	-	*



**Part No. PVC 107
Concentric Reducer Bushing**
(SPG x H)

14x4 ^(F)	12208	-	-	*	N
14x6 ^(F)	12209	-	-	*	N
14x8 ^(F)	12210	-	-	*	N
14x10 ^(F)	12204	-	-	*	
14x12 ^(F)	12205	-	-	*	
16x4 ^(F)	12212	-	-	*	N
16x6 ^(F)	12206	-	-	*	
16x8 ^(F)	12207	-	-	*	
16x10 ^(F)	12182	-	-	*	
16x12 ^(F)	12183	-	-	*	
16x14 ^(F)	12211	-	-	*	N

Size	UPC# 611942-	No. Per Carton	No. Per Pallet	List Price Each	Size	UPC# 611942-	No. Per Carton	No. Per Pallet	List Price Each
------	-----------------	-------------------	-------------------	--------------------	------	-----------------	-------------------	-------------------	--------------------



**Part No. PVC 108
Flush Bushing (Cleanout Adapter)**
(SPG x FPT)

2x1½	03274	50	7200	\$198.90
------	-------	----	------	-----------------



**Part No. PVC 108 X
Flush Bushing (Cleanout Adapter)
with Plug**
(SPG x FPT)

10x8	10234	-	-	*
12x8	10235	-	-	*



**Part No. PVC 109
Male Adapter**
(Will not accept a tail piece)
Octagon shoulders for tightening purposes.
(MPT x H)

1¼	03285	50	7200	\$110.60
1¼x1½‡	03287	25	3600	50.85
1½	03286	50	5600	35.20
2	03288	50	4000	47.15
3	03289	25	1400	131.95
4	03290	25	875	298.75



**Part No. PVC 110
Flush Cleanout Plug**
(MPT)

2	03291	25	7200	\$120.20
3	03292	50	5600	139.85
4	03293	25	2800	163.50



**Part No. PVC 110 A
Flush Cleanout Plug with O-Ring**
(MPT)

2	15364	20	5760	\$146.70
3	15365	20	2880	170.55
4	15366	25	2000	199.40



**Part No. PVC 110 B
Flush Cleanout Plug with
Threaded Brass Insert**
(MPT)

2	15077	25	7200	\$149.90
3	15078	50	4000	173.65
4	15079	25	2800	228.90



**Part No. PVC 111
Male Fitting Adapter**
(SPG x MPT)

1½	03298	50	7200	\$152.05
1½x1¼	12554	100	8000	139.05
2	03299	25	3600	169.65
3	13345	25	1225	310.60



**Part No. PVC 113
Tray Adapter**
(H)

1½	13465	10	2160	\$102.30
----	-------	----	------	-----------------



**Part No. PVC 115
Adapter Coupling**
(SDR 35 H x DWV H)

8 ^(F)	12270	5	80	\$2,982.75
10 ^(F)	12271	-	-*	N
10x8 ^(F)	12272	-	-*	N
12 ^(F)	12273	-	-*	N

‡ 1¼" side is threaded.

^(F) Fabricated

* For pricing of this item, please see current PVC Large-Diameter DWV fitting list price schedule.

Note: N = non-stock item – contact customer service for availability.

Size	UPC# 611942-	No. Per Carton	No. Per Pallet	List Price Each	Size	UPC# 611942-	No. Per Carton	No. Per Pallet	List Price Each
------	-----------------	-------------------	-------------------	--------------------	------	-----------------	-------------------	-------------------	--------------------



**Part No. PVC 116
Cap
(SOCKET)**

1½	03301	10	2880	\$74.65
2	03302	5	1800	124.40
3	03303	10	1440	208.05
4	03304	6	672	296.70
6	03305	5	175	749.50
8	10252	3	63	2,014.90
10	11121	-	-	*
12	11122	-	-	*
14 ^(F)	12214	-	-	*
16 ^(F)	12213	-	-	*



**Part No. PVC 117
Adapter Coupling
(Adapts S&D Spigot to DWV Spigot)
(H x H)**

3x3**	13462	10	800	\$502.95
4x3	03307	20	1120	280.95
4x4	03308	10	560	291.55



**Part No. PVC 117 X
Adapter Bushing
(Adapts S&D Hub to DWV Spigot)
(SPG x H)**

4x3	13349	20	700	\$319.45
-----	-------	----	-----	-----------------



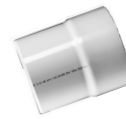
**Part No. PVC 118
Adapter Bushing
(Adapts DWV Hub to S&D Spigot)
(DWV SPG x HUB)**

3	03309	20	2240	\$254.35
4	03310	10	1120	111.10



**Part No. PVC 119
No-Hub Adapter
(SPG x H)
(Adapts Cast Iron NH Spigot to DWV Spigot)**

1½	03311	25	3600	\$243.35
2	03312	25	2800	97.25
2x1½	03313	25	3600	339.55
3	03314	20	1600	141.45
4	03316	15	840	181.30
4x3	03315	10	800	348.70



**Part No. PVC 120
Adapter Bushing
(DWV SPG x SDR 35 H)**

8 ^(F)	12274	5	80	\$3,107.35
10 ^(F)	12275	-	-	* N
12 ^(F)	12276	-	-	* N



**Part No. PVC 122
Spigot Adapter, Cast Iron
(H x H)
(Adapts Cast Iron Spigot to DWV Spigot)**

2x2	03317	10	1440	\$363.75
3x3	03318	10	560	618.80
4x4	03319	15	420	544.95



**Part No. PVC 123
Hub Adapter, Cast Iron
(H x SPG)
(Adapts DWV Spigot to Cast Iron Hub)**

2x2 ^(P)	03320	20	1600	\$184.35
3x3 ^(P)	03321	20	700	349.75
4x4 ^(P)	03322	20	360	526.00

- ^(F) Fabricated
- ^(P) Plain End: Joint can be made with compression gasket only.
- * For pricing of this item, please see current PVC Large-Diameter DWV fitting list price schedule.
- ** Assembled from two molded components

Note: N = non-stock item – contact customer service for availability.

Size	UPC# 611942-	No. Per Carton	No. Per Pallet	List Price Each	Size	UPC# 611942-	No. Per Carton	No. Per Pallet	List Price Each
------	-----------------	-------------------	-------------------	--------------------	------	-----------------	-------------------	-------------------	--------------------



Part No. PVC 123 R
Hub Adapter, Cast Iron, Increaser
(H x SPG)
(Adapts DWV Spigot to Cast Iron Hub)

1½x2 ^(P)	03323	10	1440	\$349.95
3x4 ^(P)	03326	10	490	398.70



Part No. PVC 130
Repair Coupling
(H x H)

1½	03337	25	3600	\$101.70
2	03338	25	3600	70.80
3	03339	10	1120	179.25
4	03340	5	560	344.70
6	03341	5	175	1,541.15
8 ^(F)	12217	5	80	2,872.10
10 ^(F)	12215	-	-*	N
12 ^(F)	12216	-	-*	N



Part No. PVC 131
Test Cap

1½	05285	100	54000	\$41.60
2	05287	100	28800	43.90
3	05288	50	10800	45.35
4	05289	50	9600	56.80



Part No. PVC 132
Outside Diameter Test Cap

1½	10893	100	21600	\$39.10
2	10894	100	14400	36.70
3	10895	50	7200	48.45
4	10896	25	3600	60.20

- ^(F) Fabricated
^(P) Plain End: Joint can be made with compression gasket only.
[†] Not a sanitary pattern
^{*} For pricing of this item, please see current PVC Large-Diameter DWV fitting list price schedule.

Note: N = non-stock item – contact customer service for availability.



Part No. PVC 300
1/4 Bend
(H x H)

1¼	03354	100	3500	\$137.10
1½	03355	100	2800	39.25
2	03356	50	1400	62.05
3	03357	25	450	182.45
4	03358	10	180	360.15
6	03359	5	80	1,261.45
8	03360	1	28	1,629.95
10	10167	-	-*	
12	10168	-	-*	
14 ^(F)	12218	-	-*	
16 ^(F)	12219	-	-*	



Part No. PVC 300 A
Vent 1/4 Bend
(H x H)

8 [†]	12188	2	32	\$3,442.35
10 [†]	10019	-	-	*
12 [†]	10025	-	-	*



Part No. PVC 300 R
1/4 Bend, Reducing
(H x H)

2x1½	04196	10	1440	\$226.10
------	-------	----	------	-----------------



Part No. PVC 300 S
1/4 Bend with Side Inlet
(H x H)

3x3x1½	03361	10	490	\$529.95
3x3x2	03362	10	350	356.35



Part No. PVC 301
Vent 1/4 Bend, Street
(H x SPG)

8 ^(F)	12279	2	24	\$5,120.30
10 ^(F)	12277	-	-*	N
12 ^(F)	12278	-	-*	N

Size	UPC# 611942-	No. Per Carton	No. Per Pallet	List Price Each	Size	UPC# 611942-	No. Per Carton	No. Per Pallet	List Price Each
------	-----------------	-------------------	-------------------	--------------------	------	-----------------	-------------------	-------------------	--------------------



Part No. PVC 302
1/4 Bend, Street
(SPG x H)

1¼	03369	35	3920	\$223.75
1½	03370	100	3500	50.85
2	03371	50	1750	78.15
3	03372	15	420	217.65
4	03373	10	180	364.05
6	03374	5	80	1,627.25
8	11348	1	28	3,156.85
10 ^(F)	12220	-	-	*
12 ^(F)	12221	-	-	*
14 ^(F)	12222	-	-	* N
16 ^(F)	12223	-	-	* N



Part No. PVC 303
1/4 Bend with Low Heel Inlet
(ALL HUB)

3x3x1½	03375	25	400	\$392.15
3x3x2	03376	25	400	314.10
4x4x2	03377	15	180	620.30



Part No. PVC 304
Long Sweep 1/4 Bend
(H x H)

1½	03378	50	1750	\$91.15
2	03379	20	980	101.85
3	03380	10	350	234.50
4	03381	5	175	442.50
6	11349	5	60	1,725.30



Part No. PVC 305
Long Sweep 1/4 Bend
with High Heel Inlet
(ALL HUB)

3x3x2	03383	25	300	\$1,714.90
-------	-------	----	-----	-------------------



Part No. PVC 307
Long Sweep 1/4 Bend with Low Heel Inlet
(ALL HUB)

3x3x2	03385	25	300	\$703.45
-------	-------	----	-----	-----------------



Part No. PVC 309
Long Sweep 1/4 Bend, Street
(H x SPG)

1½	03386	50	2450	\$139.85
2	03387	20	980	167.50
3	03388	20	360	416.90
4	03389	5	175	642.20



Part No. PVC 310
1/4 Bend, Street with Low Heel Inlet
(H x SPG x H)

3x3x2	04153	15	420	\$898.60
-------	-------	----	-----	-----------------



Part No. PVC 311
Long Sweep 1/4 Bend with Side Inlet
(ALL HUB)

3x3x2	03391	25	300	\$1,044.25
-------	-------	----	-----	-------------------



Part No. PVC 319
1/6 Bend
(H x H)

1½	03392	40	3200	\$91.70
2	03393	25	1400	106.70
3	03394	20	560	393.75
4	03395	10	280	524.90

^(F) Fabricated

* For pricing of this item, please see current PVC Large-Diameter DWV fitting list price schedule.

Note: N = non-stock item – contact customer service for availability.

Size	UPC# 611942-	No. Per Carton	No. Per Pallet	List Price Each	Size	UPC# 611942-	No. Per Carton	No. Per Pallet	List Price Each
------	-----------------	-------------------	-------------------	--------------------	------	-----------------	-------------------	-------------------	--------------------



Part No. PVC 320
1/6 Bend, Street
(H x SPG)

1½	03396	40	3200	\$166.35
2	03397	25	2000	214.25
3	03398	20	700	462.00
4	03399	10	280	718.50



Part No. PVC 321
1/8 Bend
(H x H)

1¼	03400	50	4000	\$93.50
1½	03401	100	3500	38.50
2	03402	50	1750	57.45
3	03403	20	560	163.50
4	03404	10	280	299.10
6	03405	3	84	1,105.50
8	03406	1	28	1,447.40
10	10020	-	-	*
12	10026	-	-	*
14 ^(F)	12224	-	-	*
16 ^(F)	12225	-	-	*



Part No. PVC 323
1/8 Bend, Street
(SPG x H)

1¼	03407	40	4480	\$128.05
1½	03408	100	3500	36.90
2	03409	50	1750	58.75
3	03410	20	700	154.85
4	03411	10	280	265.40
6	03412	3	84	1,309.70
8	03413	1	28	1,570.80
10	10142	-	-	*
12	10143	-	-	*
14 ^(F)	12227	-	-	*
16 ^(F)	12226	-	-	*



Part No. PVC 324
1/16 Bend
(H x H)

1½	03416	50	4000	\$54.70
2	03417	25	2000	64.90
3	03418	20	700	159.85
4	03419	15	420	252.75
6	03420	3	84	1,459.50
8	11350	2	56	2,416.00
10	11351	-	-	*
12	11352	-	-	*
14 ^(F)	12228	-	-	*
16 ^(F)	12229	-	-	*



Part No. PVC 326
1/16 Bend, Street
(SPG x H)

1½	03421	50	4000	\$148.25
2	03422	20	2240	158.90
3	03423	20	700	247.55
4	03424	15	420	359.30
6	03425	4	112	1,414.05
8	12234	4	64	5,991.10
10 ^(F)	12230	-	-	*
12 ^(F)	12231	-	-	*
14 ^(F)	12232	-	-	*
16 ^(F)	12233	-	-	*



Part No. PVC 327
Double 1/4 Bend
(ALL HUB)

1½	03426	20	1600	\$154.85
2	03427	25	875	211.30
2x1½x1½	03428	25	1400	194.60
3	03429	10	280	552.20

^(F) Fabricated
* For pricing of this item, please see current PVC Large-Diameter DWV fitting list price schedule.

Note: N = non-stock item – contact customer service for availability.

Size	UPC# 611942-	No. Per Carton	No. Per Pallet	List Price Each	Size	UPC# 611942-	No. Per Carton	No. Per Pallet	List Price Each
------	-----------------	-------------------	-------------------	--------------------	------	-----------------	-------------------	-------------------	--------------------



Part No. PVC 328
1/32 Bend
(H x H)

8 ^(F)	12237	2	32	\$6,350.45
10 ^(F)	12235	-	-	* N
12 ^(F)	12236	-	-	* N



Part No. PVC 329
Closet Bend, Reducing
(H x H)

3x4	03430	10	280	\$293.35
-----	-------	----	-----	----------



Part No. PVC 330
Closet Bend, Reducing
(H x SPG)

3x4	03431	10	280	\$571.25
-----	-------	----	-----	----------



Part No. PVC 330 X
Closet Bend, Reducing with Test Cap
(H x SPG)

3x4	03432	10	280	\$732.40
-----	-------	----	-----	----------



Part No. PVC 331
Vent Ell
(H x H)

1½	03434	20	2880	\$81.10
2	03435	30	1680	105.10
3	03436	25	700	272.40



Part No. PVC 333
Vent Ell, Street
(H x SPG)

1½	03441	25	2800	\$81.70
2	03442	20	1600	121.70
3	03443	5	560	326.05

- (F) Fabricated
 † Not a sanitary pattern
 * For pricing of this item, please see current PVC Large-Diameter DWV fitting list price schedule.
 ** Assembled from two molded components

Note: N = non-stock item – contact customer service for availability.



Part No. PVC 400
Sanitary Tee
(ALL HUB)

1¼	03462	25	2000	\$146.95
1½	03463	100	1800	68.80
2	03464	35	980	101.00
3	03465	30	360	265.95
4	03466	5	140	485.55
6	03467	6	72	1,949.50
8	03468	2	24	4,319.70



Part No. PVC 400
Sanitary Tee
(ALL HUB)

10 ^(F)	13837	-	-	*
12 ^(F)	13838	-	-	*



Part No. PVC 400 A
Straight Tee
(ALL HUB)

8 [†]	12189	2	24	\$4,566.60
10 [†]	10018	-	-	*
12 [†]	10024	-	-	*
14 ^{†(F)}	12238	-	-	*
16 ^{†(F)}	12239	-	-	*



Part No. PVC 401
Sanitary Tee, Reducing
(ALL HUB)

2x1½x1½	03469	25	1225	\$89.05
2x1½x2	03470	25	875	107.30
2x2x1½	03471	50	900	89.45
3x3x1½	03472	20	560	193.00
3x3x2	03473	10	490	200.45
4x4x1½	03474	5	280	509.05
4x4x2	03475	10	280	417.90
4x4x3	03476	10	180	567.75
6x6x4	03477	6	72	1,885.40
8x8x4**	11357	2	24	5,936.20
8x8x6**	11358	2	24	6,481.35

Size	UPC# 611942-	No. Per Carton	No. Per Pallet	List Price Each	Size	UPC# 611942-	No. Per Carton	No. Per Pallet	List Price Each
------	-----------------	-------------------	-------------------	--------------------	------	-----------------	-------------------	-------------------	--------------------



**Part No. PVC 401 A
Straight Tee, Reducing
(ALL HUB)**

8x8x4†**	12253	2	24	\$5,805.80
8x8x6†**	12241	2	24	6,069.50
10x10x4†**	11353	-	-	*
10x10x6†**	11354	-	-	*
10x10x8†	10021	-	-	*
12x12x4†***	12256	-	-	* N
12x12x6†**	11355	-	-	*
12x12x8†	10028	-	-	*
12x12x10†	10027	-	-	*
14x14x4†(F)	12244	-	-	*
14x14x6†(F)	12245	-	-	*
14x14x8†(F)	12246	-	-	*
14x14x10†(F)	12242	-	-	* N
14x14x12†(F)	12243	-	-	*
16x16x4†(F)	12250	-	-	*
16x16x6†(F)	12251	-	-	*
16x16x8†(F)	12252	-	-	*
16x16x10†(F)	12247	-	-	* N
16x16x12†(F)	12248	-	-	*



**Part No. PVC 403
Sanitary Tee, Street
(SPG x H x H)**

1½	03479	20	1600	\$205.65
2	03480	25	875	199.65
3	03481	30	360	332.50
4	03482	10	160	839.90



**Part No. PVC 404
Sanitary Tee, Street, Reducing
(SPG x H x H)**

2x1½x1½	14581	25	1225	\$184.00
2x2x1½	03484	50	1400	175.70
3x3x1½	03485	10	490	382.55
3x3x2	03486	20	560	328.60
4x4x2	03487	5	280	624.30

- (F) Fabricated
- † Not a sanitary pattern
- * For pricing of this item, please see current PVC Large-Diameter DWV fitting list price schedule.
- ** Assembled from two molded components

Note: N = non-stock item – contact customer service for availability.



**Part No. PVC 410
Tee Cross
(ALL HUB)**

6 ^(F)	12595	2	24	\$6,015.65
6x4 ^(F)	12596	3	36	5,323.90
8 ^(F)	12254	2	8	9,710.15
8x4 ^(F)	12265	2	24	7,243.60
8x6 ^(F)	12266	1	16	7,845.50
10 ^(F)	12255	-	-	* N
10x4 ^(F)	12257	-	-	* N
10x6 ^(F)	12258	-	-	* N
10x8 ^(F)	12259	-	-	* N
12 ^(F)	12260	-	-	* N
12x4 ^(F)	12262	-	-	*
12x6 ^(F)	12263	-	-	* N
12x8 ^(F)	12264	-	-	* N
12x10 ^(F)	12261	-	-	* N



**Part No. PVC 416
Sanitary Tee with Left Side Inlet
(ALL HUB)**

3x3x3x1½	03500	10	280	\$749.50
3x3x3x2	03501	10	280	517.55
4x4x4x2	03502	5	140	1,205.65



**Part No. PVC 417
Sanitary Tee with Right Side Inlet
(ALL HUB)**

3x3x3x1½	03503	10	280	\$749.50
3x3x3x2	03504	10	280	517.55
4x4x4x2	03505	5	140	1,205.65



**Part No. PVC 418
Sanitary Tee with Right & Left Side
Inlets
(ALL HUB)**

3x3x3x2x2	03507	5	245	\$758.90
4x4x4x2x2	03508	5	90	1,579.85

Size	UPC# 611942-	No. Per Carton	No. Per Pallet	List Price Each	Size	UPC# 611942-	No. Per Carton	No. Per Pallet	List Price Each
------	-----------------	-------------------	-------------------	--------------------	------	-----------------	-------------------	-------------------	--------------------



Part No. PVC 428
Double Sanitary Tee
(ALL HUB)

1½	03509	25	1225	\$151.10
2	03510	20	700	204.10
3	03511	20	240	570.95
4	03512	4	112	918.45



Part No. PVC 429
Double Sanitary Tee, Reducing
(ALL HUB)

2x2x1½x1½	03513	20	700	\$160.35
3x3x1½x1½	03514	20	360	372.00
3x3x2x2	03516	10	350	404.30
4x4x2x2	03518	5	245	759.80
4x4x3x3	03519	5	140	788.40



Part No. PVC 431
Double Sanitary Tee, Street, Reducing
(SPG x H x H x H)

3x3x1½x1½	03521	10	490	\$1,383.50
-----------	-------	----	-----	-------------------



Part No. PVC 438
Double Sanitary Tee with Side Inlet
(ALL HUB)

3x3x3x3x2	03523	10	180	\$840.60
4x4x4x4x2	03524	10	120	1,847.80



Part No. PVC 439
Double Sanitary Tee with Right & Left
Side Inlets
(ALL HUB)

3x3x3x3x2x2	03527	10	120	\$1,304.75
4x4x4x4x2x2	03528	5	80	2,119.55



Part No. PVC 441
Vent Tee
(ALL HUB)

1½	03530	25	2000	\$291.95
2	03531	25	1225	218.60
3	03532	10	490	658.10
4	03533	5	245	941.55



Part No. PVC 444 A
Cleanout Tee with O-Ring Plug
(H x H x FPT)

2	15367	10	800	\$246.80
3	15368	10	490	471.20
4	15369	5	175	814.40



Part No. PVC 444 X
Cleanout Tee with Cleanout Plug
(H x H x FPT)

1½	03539	10	1440	\$174.45
2	03540	10	800	202.30
3	03541	10	490	386.60
4	03542	5	175	667.65
6	10216	5	60	3,190.90
6x6x4**	11360	2	36	5,170.90
8	10217	2	24	6,307.40
8x8x4 ^(F)	12293	2	24	5,547.25
8x8x6***	11361	2	24	5,398.95
10	12281	-	-	*
10x10x4 ^(F)	12282	-	-	* N
10x10x6 ^(F)	12280	-	-	*
10x10x8	10164	-	-	*
12	12283	-	-	*
12x12x4 ^(F)	12285	-	-	* N
12x12x6**	11356	-	-	*
12x12x8	10165	-	-	*
12x12x10 ^(F)	12284	-	-	* N

- ^(F) Fabricated
* For pricing of this item, please see current PVC Large-Diameter DWV fitting list price schedule.
** Assembled from two molded components
*** Assembled from three molded components

Note: N = non-stock item – contact customer service for availability.

Size	UPC# 611942-	No. Per Carton	No. Per Pallet	List Price Each	Size	UPC# 611942-	No. Per Carton	No. Per Pallet	List Price Each
------	-----------------	-------------------	-------------------	--------------------	------	-----------------	-------------------	-------------------	--------------------



Part No. PVC 445
Flush Cleanout Tee
(H x H x FPT)

1½	03543	20	2240	\$141.45
2	03544	20	980	165.10
3	03545	10	490	320.25
4	03546	10	180	569.75
6	10214	5	60	2,879.05
8	10215	2	24	4,890.25
10	12286	-	-	*
10x10x6 ^(F)	12289	-	-	*
12	12287	-	-	*



Part No. PVC 445 A
Flush Cleanout Tee with O-Ring Plug
(H x H x FPT)

2	15370	10	800	\$347.85
3	15371	10	490	561.10
4	15372	5	245	893.85



Part No. PVC 445 X
Flush Cleanout Tee with Cleanout Plug
(H x H x FPT)

2	03547	10	800	\$285.45
3	03548	10	490	460.05
4	03549	5	245	732.80



Part No. PVC 447
Horizontal Twin Tee
(ALL HUB)

3x3x1½x1½	03556	5	400	\$1,112.60
-----------	-------	---	-----	-------------------



Part No. PVC 448
Two-Way Cleanout
(ALL HUB)

3	03557	10	180	\$611.90
4	03558	5	90	791.95
6	16591	3	12	6,566.60

^(F) Fabricated
* For pricing of this item, please see current PVC Large-Diameter DWV fitting list price schedule.



Part No. PVC 449
**Sanitary Tee with 2" Left Hand
Sanitary Inlet on Center**
(ALL HUB)

2	03559	20	560	\$552.20
---	-------	----	-----	-----------------



Part No. PVC 500
Double Fixture Fitting
(ALL HUB)

2	04155	10	350	\$347.65
2x1½x1½x1½	04148	20	700	427.75
2x2x1½x1½	04896	20	700	399.80
3	04156	10	160	750.50



Part No. PVC 501
Combination Wye and 1/8 Bend
(One Piece)
(ALL HUB)

1½	03561	50	900	\$166.45
2	03562	20	560	207.75
3	03563	10	180	457.25
4	03564	10	120	900.90



Part No. PVC 502
**Combination Wye and 1/8 Bend,
Reducing (One Piece)**
(ALL HUB)

2x1½x1½	03565	5	720	\$329.25
2x2x1½	03567	20	980	233.75
3x3x1½	03568	15	420	416.90
3x3x2	03569	10	350	312.35
4x4x2	03570	5	175	470.50
4x4x3	03571	5	140	607.00
6x6x4	S	S	S	S

S See part no. PVC 504, 6x6x4 for information.

Size	UPC# 611942-	No. Per Carton	No. Per Pallet	List Price Each	Size	UPC# 611942-	No. Per Carton	No. Per Pallet	List Price Each
------	-----------------	-------------------	-------------------	--------------------	------	-----------------	-------------------	-------------------	--------------------



Part No. PVC 503
Combination Wye and 1/8 Bend
(Two Piece)
(ALL HUB)

6**	03574	2	32	\$3,468.40
8 [§] **	03575	1	12	5,233.95
10 [§] **	10169	-	-	*
12 [§] **	10170	-	-	*
14 ^(F) ∞	12296	-	-	* N
16 ^(F) ∞	12297	-	-	* N



Part No. PVC 504
Combination Wye and 1/8 Bend,
Reducing (Two Piece)
(ALL HUB)

6x6x3 [§]	03581	5	60	\$3,648.95
6x6x4 ⁽¹⁾	03582	5	60	3,119.55
8x8x4∞	03583	1	16	3,163.45
8x8x6 [§]	10171	1	16	5,196.25
10x10x4 [§]	10236	-	-	*
10x10x6 [§]	10238	-	-	*
10x10x8 [§]	10172	-	-	*
12x12x4 [§]	10237	-	-	*
12x12x6 [§]	10239	-	-	*
12x12x8 [§]	10173	-	-	*
12x12x10 [§]	10174	-	-	*
14x14x4 ^(F) ∞	12307	-	-	* N
14x14x6 ^(F) ∞	12303	-	-	* N
14x14x8 ^(F) ∞	12304	-	-	* N
14x14x10 ^(F) ∞	12306	-	-	* N
14x14x12 ^(F) ∞	12298	-	-	* N
16x16x4 ^(F) ∞	12301	-	-	* N
16x16x6 ^(F) ∞	12305	-	-	* N
16x16x8 ^(F) ∞	12302	-	-	* N
16x16x10 ^(F) ∞	12299	-	-	* N
16x16x12 ^(F) ∞	12300	-	-	* N
16x16x14 ^(F) ∞	12308	-	-	* N



Part No. PVC 507
Double Combination Wye and 1/8 Bend
(ALL HUB)
(Three pieces or Five pieces)

2x2x1½x1½	03592	10	490	\$814.40
3x3x2x2	03594	10	180	1,334.35
3	03593	10	120	1,291.95
4	03595	5	60	2,359.60
4x4x2x2	03596	5	90	2,570.70
4x4x3x3	03597	5	80	2,177.05
6x6x4x4 [§]	10616	1	16	5,769.90



Part No. PVC 515
Combination Wye & 1/8 Bend
(with Left Side Inlet)
(ALL HUB)

3x3x3x2	03603	10	180	\$1,393.90
---------	-------	----	-----	-------------------



Part No. PVC 516
Combination Wye & 1/8 Bend
(with Right Side Inlet)
(ALL HUB)

3x3x3x2	03604	10	180	\$1,393.90
---------	-------	----	-----	-------------------



Part No. PVC 517
Combination Wye & 1/8 Bend
(with Right & Left Side Inlet)
(ALL HUB)

3x3x3x2x2	03605	5	140	\$2,088.45
-----------	-------	---	-----	-------------------

- ⁽¹⁾ One piece short pattern
- ∞ Fitting shipped with street bend strapped to fitting
- ^(F) Fabricated
- § Fitting shipped with any required bushing(s) installed, street 1/8 bend strapped to fitting; assembled from molded components.
- * For pricing of this item, please see current PVC Large-Diameter DWV fitting list price schedule.
- ** Assembled from two molded components

Note: N = non-stock item – contact customer service for availability.

Size	UPC# 611942-	No. Per Carton	No. Per Pallet	List Price Each	Size	UPC# 611942-	No. Per Carton	No. Per Pallet	List Price Each
------	-----------------	-------------------	-------------------	--------------------	------	-----------------	-------------------	-------------------	--------------------



**Part No. PVC 600
Wye
(ALL HUB)**

1¼	03606	35	1715	\$187.45
1½	03607	50	1400	125.10
2	03608	25	700	123.20
3	03609	25	300	333.05
4	03610	5	140	603.90
6	03611	4	48	1,743.40
8	03612	1	16	3,073.75
10	10017	-	-	*
12	10023	-	-	*
14 ^(F)	12314	-	-	*
16 ^(F)	12309	-	-	*



**Part No. PVC 601
Wye, Reducing
(ALL HUB)**

2x1½x1½	03615	25	1225	\$172.15
2x1½x2	03616	10	800	266.55
2x2x1½	03617	25	875	150.60
3x3x1½	03618	15	525	222.65
3x3x2	03619	25	400	246.20
4x4x1½	03620	5	175	770.05
4x4x2	03621	10	180	361.50
4x4x3	03622	10	160	490.25
6x6x3	03623	5	60	1,693.85
6x6x4	03624	5	60	1,407.75
8x8x4	10617	2	32	2,968.15
8x8x6	03625	1	16	3,060.55
10x10x4**	10240	-	-	*
10x10x6**	10241	-	-	*
10x10x8	10022	-	-	*
12x12x4**	10242	-	-	*
12x12x6**	10243	-	-	*
12x12x8	10030	-	-	*
12x12x10	10029	-	-	*
14x14x4 ^(F)	12315	-	-	* N
14x14x6 ^(F)	12316	-	-	*
14x14x8 ^(F)	12317	-	-	*
14x14x10 ^(F)	12318	-	-	*
14x14x12 ^(F)	12319	-	-	*
16x16x4 ^(F)	12311	-	-	*
16x16x6 ^(F)	12312	-	-	*
16x16x8 ^(F)	12313	-	-	*
16x16x10 ^(F)	12310	-	-	*
16x16x12 ^(F)	12320	-	-	*
16x16x14 ^(F)	12321	-	-	*

! WARNING

Testing with or use of compressed air or gas in ABS / CPVC / PVC pipe or fittings can result in explosive failures and cause severe injury or death.

AIR/GAS



- NEVER test with or transport/store compressed air or gas in ABS / CPVC / PVC pipe or fittings.
- NEVER test ABS / CPVC / PVC pipe or fittings with compressed air or gas, or air over water boosters.
- ONLY use ABS / CPVC / PVC pipe or fittings for water or approved chemicals.
- Refer to warnings on PPFA's website and ASTM D 1785.

^(F) Fabricated

* For pricing of this item, please see current PVC Large-Diameter DWV fitting list price schedule.

** Assembled from two molded components

Note: N = non-stock item – contact customer service for availability.

Size	UPC# 611942-	No. Per Carton	No. Per Pallet	List Price Each	Size	UPC# 611942-	No. Per Carton	No. Per Pallet	List Price Each
------	-----------------	-------------------	-------------------	--------------------	------	-----------------	-------------------	-------------------	--------------------



**Part No. PVC 602
Wye, Street**
(SPG x H x H)

1½	03629	50	1750	\$231.70
2	03630	25	700	222.25
3	03631	10	280	483.60
4	03632	10	120	990.15



**Part No. PVC 603
Wye, Street, Reducing**
(SPG x H x H)

3x3x1½	03633	20	360	\$560.65
3x3x2	03634	30	480	380.20
4x4x2	03635	10	180	1,130.40
4x4x3	03636	10	160	1,053.30



**Part No. PVC 611
Double Wye**
(ALL HUB)

1½	03637	25	875	\$281.30
2	03638	20	560	333.85
3	03639	15	180	652.85
4	03640	5	80	1,406.80
6	03641	2	24	2,629.85
8 ^(F)	12323	-	-	11,739.60
10 ^(F)	12324	-	-	*
12 ^(F)	12325	-	-	*
14 ^(F)	12326	-	-	*



**Part No. PVC 611 S
Double Wye with 2'' Side Inlet**
(ALL HUB)

3	04891	10	160	\$4,008.65
---	-------	----	-----	-------------------

- ^(F) Fabricated
* For pricing of this item, please see current PVC Large-Diameter DWV fitting list price schedule.
** Assembled from two molded components

Note: N = non-stock item – contact customer service for availability.



**Part No. PVC 612
Double Wye, Reducing**
(ALL HUB)

2x2x1½x1½	03643	10	560	\$286.80
3x3x1½x1½	03644	10	350	597.70
3x3x2x2	03645	8	224	486.50
4x4x2x2	03646	5	175	794.05
4x4x3x3	03647	5	90	1,048.70
6x6x4x4**	10615	2	32	3,679.65
8x8x4x4 ^(F)	12327	1	16	6,952.60
8x8x6x6 ^(F)	12328	2	8	8,308.75
10x10x4x4 ^(F)	12329	-	-	* N
10x10x6x6 ^(F)	12330	-	-	*
10x10x8x8 ^(F)	12331	-	-	*
12x12x4x4 ^(F)	12332	-	-	* N
12x12x6x6 ^(F)	12333	-	-	* N
12x12x8x8 ^(F)	12334	-	-	*
12x12x10x10 ^(F)	12335	-	-	*
14x14x6x6 ^(F)	12337	-	-	*
14x14x8x8 ^(F)	12338	-	-	* N
14x14x10x10 ^(F)	12339	-	-	*
14x14x12x12 ^(F)	12340	-	-	* N
16x16x6x6 ^(F)	12341	-	-	* N
16x16x8x8 ^(F)	12343	-	-	* N
16x16x10x10 ^(F)	12344	-	-	* N
16x16x12x12 ^(F)	12345	-	-	* N
16x16x14x14 ^(F)	12346	-	-	* N



**Part No. PVC 625
Wye with Left Side Inlet**
(ALL HUB)

3x3x3x2	03650	5	175	\$1,648.95
4x4x4x2	04404	5	90	2,133.60



**Part No. PVC 626
Wye with Right Side Inlet**
(ALL HUB)

3x3x3x2	03651	5	175	\$1,648.95
4x4x4x2	04405	5	90	2,133.60

Size	UPC# 611942-	No. Per Carton	No. Per Pallet	List Price Each	Size	UPC# 611942-	No. Per Carton	No. Per Pallet	List Price Each
------	-----------------	-------------------	-------------------	--------------------	------	-----------------	-------------------	-------------------	--------------------



**Part No. PVC 700
Return Bend**
(H x H)

1½	03653	20	1600	\$124.90
2	03654	35	630	237.00
3	03655	10	280	665.20
4	03656	5	140	1,208.05



**Part No. PVC 706 X
P-Trap**
(H x H)

1½	03668	25	1225	\$145.80
2	03669	20	560	177.70
3	03670	10	180	600.20
4	03671	4	72	1,445.20
6	17111	2	24	3,248.55



**Part No. PVC 707 X
P-Trap with Cleanout**
(H x H)

1½	03676	10	800	\$223.15
2	03677	10	490	388.10



**Part No. PVC 708 P
P-Trap**
(H x H with Plastic Nut)

1¼	03680	25	1225	\$1,247.95
1½	03681	20	980	173.80
2	03682	15	420	400.70



**Part No. PVC 708 X
P-Trap**
(H x H with Chrome Nut)

1½	03683	25	875	\$257.85
----	-------	----	-----	-----------------



**Part No. PVC 709 X
P-Trap w/Cleanout**
(H x H with Chrome Nut)

1½	03688	10	800	\$861.15
----	-------	----	-----	-----------------



**Part No. PVC 710
Low Profile P-Trap with Solvent Weld**
(H x H)

2	13343	20	560	\$210.55
---	-------	----	-----	-----------------



**Part No. PVC 711 P
L.A. Pattern P-Trap with
Polyethylene Nut**
Furnished with 1½" and 1½" x 1¼"
Polyethylene nut/washer combination.
(SLIP x H)

1½	03694	25	700	\$300.70
----	-------	----	-----	-----------------



**Part No. PVC 711 W
L.A. Pattern P-Trap with PVC Nut**
Furnished with a 1½" PVC nut, a 1½" washer
and a 1½" x 1¼" washer
(SLIP with Union x H)

1½	13288	25	700	\$341.50
----	-------	----	-----	-----------------



**Part No. PVC 711 X
L.A. Pattern P-Trap with Chrome Nut**
Furnished with a 1½" Chrome nut, a 1½" washer
and a 1½" x 1¼" washer
(SLIP X H with Chrome Nut)

1½	03695	25	875	\$458.50
----	-------	----	-----	-----------------



**Part No. PVC 720 X
Drum Trap**
(H x H)

3x6x1½	03701	15	420	\$571.75
--------	-------	----	-----	-----------------



**Part No. PVC 800
Closet Flange**
(H)

4x3 ⁽⁰¹⁾	03703	25	700	\$164.50
4x4	03704	25	700	231.05

⁽⁰¹⁾ Fits over 3" pipe or inside 4" pipe.

Size	UPC# 611942-	No. Per Carton	No. Per Pallet	List Price Each	Size	UPC# 611942-	No. Per Carton	No. Per Pallet	List Price Each
	Part No. PVC 800 K Closet Flange with Knock Out (H)					Part No. PVC 812 P Closet Flange, Adjustable (with PVC Plastic Ring) (SPG)			
4x3 ⁽⁰¹⁾	03705	25	700	\$189.40	4x3	10186	25	875	\$718.20
4x4	03706	25	700	339.35	4x4	10187	25	700	840.90
	Part No. PVC 800 S Closet Flange with Stop (H)					Part No. PVC 815 Flush Closet Flange (Fits Over 3" Pipe or Inside 4" Pipe) (H)			
4x3 ⁽⁰¹⁾	04944	25	700	\$246.20	4x3 ⁽⁰¹⁾	03718	25	875	\$298.25
	Part No. PVC 801 Closet Flange, Reducing (SPG)					Part No. PVC 815 K Flush Closet Flange with Knock Out (Fits Over 3" Pipe or Inside 4" Pipe) (H)			
4x3	03707	20	700	\$222.55	4x3 ⁽⁰¹⁾	03719	20	700	\$302.85
	Part No. PVC 810 K Closet Flange, Adjustable (with PVC Plastic Ring) with Knock Out (H)					Part No. PVC 820 Offset Closet Flange, Adjustable (with Metal Ring) (1 1/2" Offset) (H)			
4x3 ⁽⁰¹⁾	10185	25	700	\$1,136.35	4x3 ⁽⁰¹⁾	03720	15	525	\$609.55
	Part No. PVC 811 Closet Flange, Adjustable (with Metal Ring) (H)					Part No. PVC 820 P Closet Flange, Adjustable (with PVC Plastic Ring) (1 1/2" Offset) (H)			
4x3 ⁽⁰¹⁾	03710	25	700	\$511.55	4x3 ⁽⁰¹⁾	10188	15	525	\$830.25
4x4	03711	25	700	530.90		Part No. PVC 900 Swivel Tray Plug Adapter with Washer (SPGxFPT)			
	Part No. PVC 811 K Closet Flange, Adjustable (with Metal Ring) with Knock Out (H)				1 1/2	14222	30	4320	\$161.65
4x3 ⁽⁰¹⁾	04913	25	700	\$761.10					
	Part No. PVC 812 Closet Flange, Adjustable (with Metal Ring) (SPG)								
4x3	03714	25	875	\$425.60					
4x4	03715	25	700	596.65					

⁽⁰¹⁾ Fits over 3" pipe or inside 4" pipe.

TERMS AND CONDITIONS OF SALE

Terms and Conditions of Sale can be found at https://charlottepipe.com/terms_and_conditions.aspx

LIMITED WARRANTY

Charlotte Pipe and Foundry Company® (Charlotte Pipe®) Products are warranted to be free from manufacturing defects and to conform to currently applicable ASTM standards for a period of five (5) years from date of delivery. Buyer's remedy for breach of this warranty is limited to replacement of, or credit for, the defective product. This warranty excludes any expense for removal or reinstallation of any product and any other incidental, consequential, or punitive damages. **This limited warranty is the only warranty made by seller and is expressly in lieu of all other warranties, express and implied, including any warranties of merchantability and fitness for a particular purpose.** No statement, conduct or description by Charlotte Pipe or its representative, in addition to or beyond this Limited Warranty, shall constitute a warranty. This Limited Warranty may only be modified in writing signed by an officer of Charlotte Pipe.

This Limited Warranty will not apply if:

- 1) The Products are used for purposes other than their intended purpose as defined by local plumbing and building codes, and the applicable ASTM standard.
- 2) The Products are not installed in good and workmanlike manner consistent with normal industry standards; installed in compliance with the latest instructions published by Charlotte Pipe and good plumbing practices; and installed in conformance with all applicable plumbing, fire and building code requirements.
- 3) This limited warranty does not apply when the products of Charlotte Pipe are used with the products of other manufacturers that do not meet the applicable ASTM or CISPI standards or that are not marked in a manner to indicate the entity that manufactured them.
- 4) In hubless cast iron installations, this warranty will not apply if products are joined with unshielded hubless couplings. Charlotte Pipe requires that its hubless cast iron pipe and fittings be joined only with shielded hubless couplings manufactured in accordance with CISPI 310, ASTM C 1277 and certified by NSF® International or with Heavy Duty Couplings meeting ASTM C 1540.
- 5) The Products fail due to defects or deficiencies in design, engineering, or installation of the piping system of which they are a part.
- 6) The Products have been the subject of modification; misuse; misapplication; improper maintenance or repair; damage caused by the fault or negligence of anyone other than Charlotte Pipe; or any other act or event beyond the control of Charlotte Pipe.
- 7) The Products fail due to the freezing of water in the Products.
- 8) The Products fail due to contact with chemical agents, fire stopping materials, thread sealant, plasticized vinyl products, or other aggressive chemical agents that are not compatible.
- 9) Pipe outlets, sound attenuation systems or other devices are permanently attached to the surface of Charlotte® PVC, ABS or CPVC products with solvent cement or adhesive glue.

Charlotte Pipe products are manufactured to the applicable ASTM or CISPI standard. Charlotte Pipe and Foundry **cannot** accept responsibility for the performance, dimensional accuracy, or compatibility of pipe, fittings, gaskets, or couplings not manufactured or sold by Charlotte Pipe and Foundry.

This Limited Warranty will not apply unless written notice of a claim is mailed to Charlotte Pipe at the address below within 30 days of discovery of the allegedly defective product.

Any Charlotte Pipe products alleged to be defective **must** be made available to Charlotte Pipe at the following address for verification, inspection and determination of cause:

Charlotte Pipe and Foundry Company
Attention: Technical Services
2109 Randolph Road
Charlotte, North Carolina 28207

Purchaser must obtain a return materials authorization and instructions for return shipment to Charlotte Pipe of any product claimed defective or shipped in error.

Any Charlotte Pipe product **proved** to be defective in manufacture will be replaced F.O.B. point of original delivery, or credit will be issued, at the discretion of Charlotte Pipe.

5/19/23

Charlotte, Charlotte Pipe and "You can't beat the system" are registered trademarks of Charlotte Pipe and Foundry Company.